

Packing List

In addition to this guide, the package includes the following items:



WP-2000M(X)-CE7

WP-2241M-CE7

WP-2241MX-CE7

WP-2641M-CE7



Wire Terminal * 16



microSD Card and microSD to SD Adapter

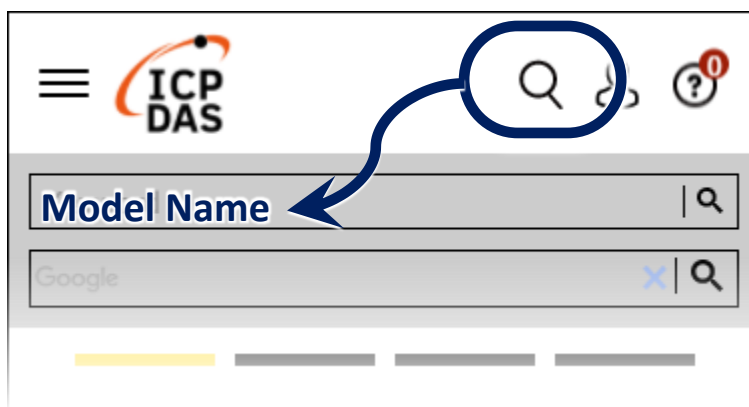


Screw Driver

Resources

How to search for drivers, manuals and spec information on ICP DAS website.

- For Mobile Web

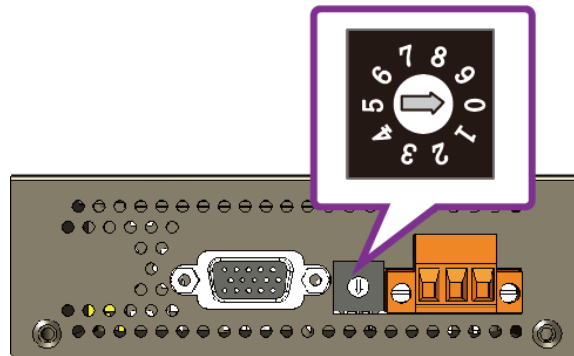


- For Desktop Web



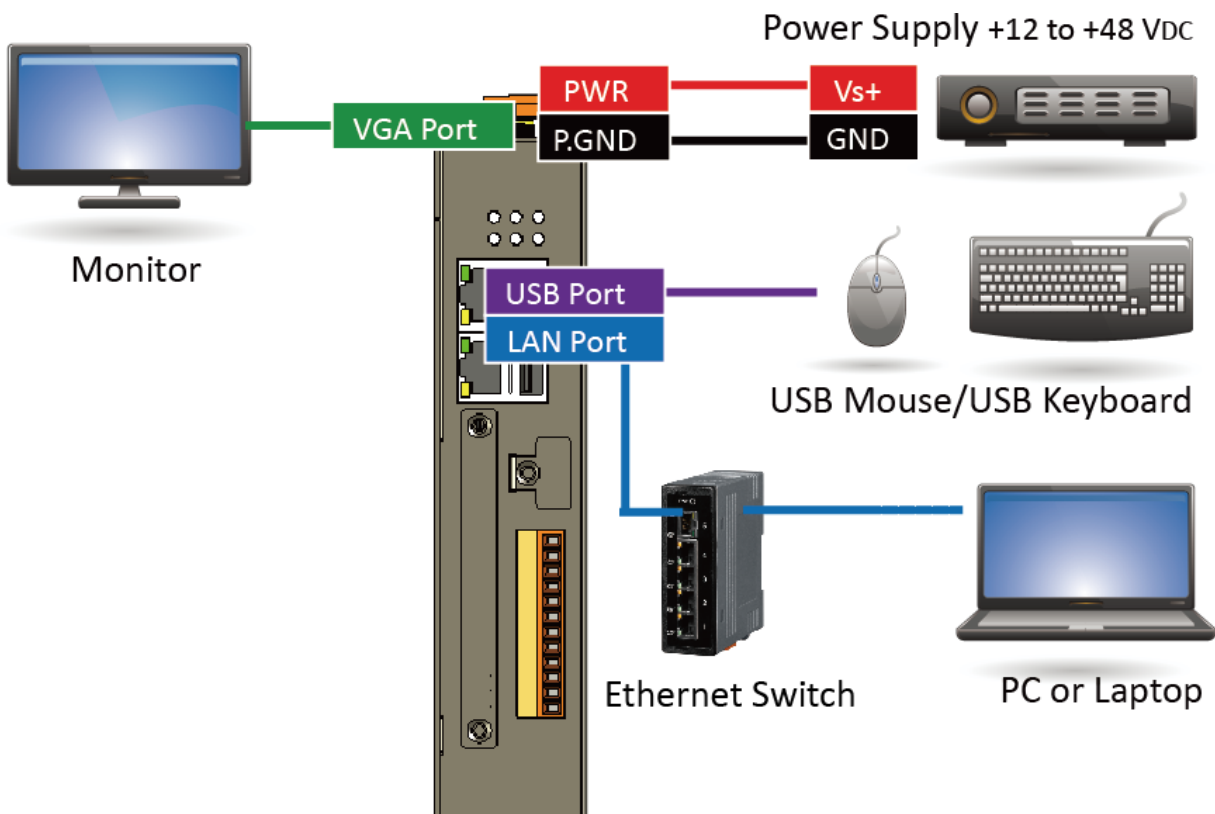
1 Configuring the Boot Mode

Before starting any installation, be sure that the switch is placed in the 『0』 position.



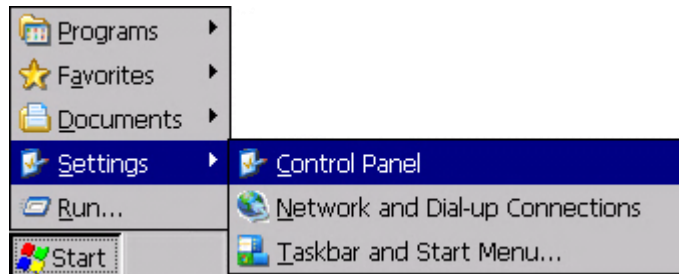
2 Connecting to PC, Monitor and Power Supply

- 1) Connect the mouse or keyboard to the USB port.
- 2) Connect PC to the Ethernet port through an Ethernet switch.
- 3) Connect the power supply (+12 to +48 VDC) to PWR and P.GND terminals.
- 4) Connect the monitor to the VGA port.

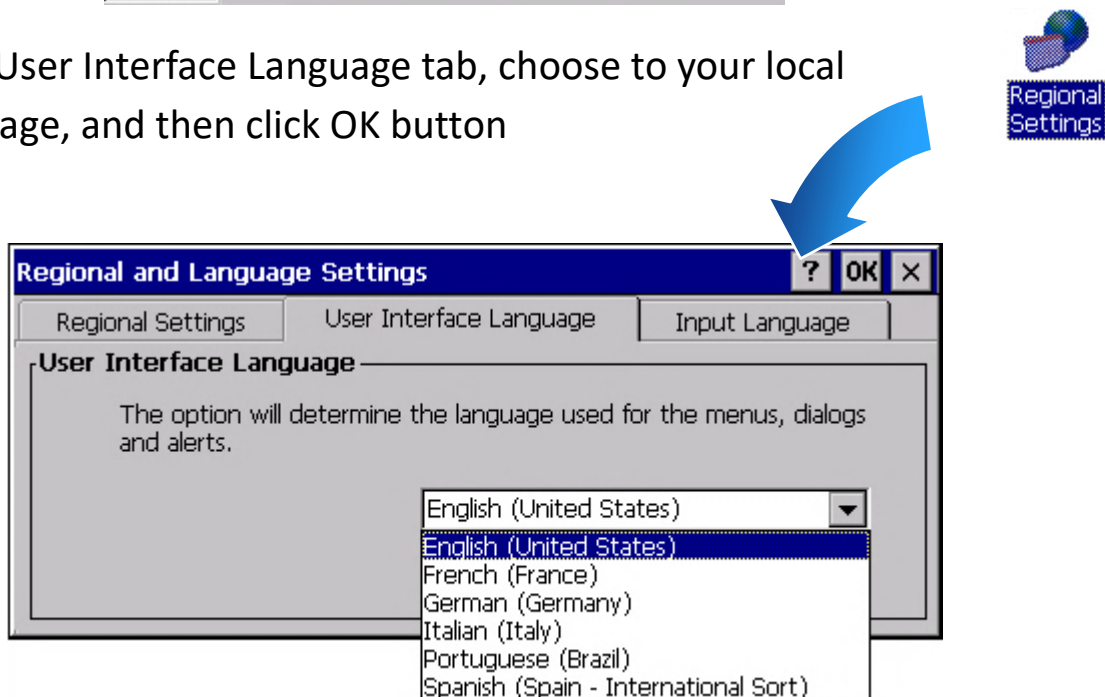


3 Changing the User Interface Language

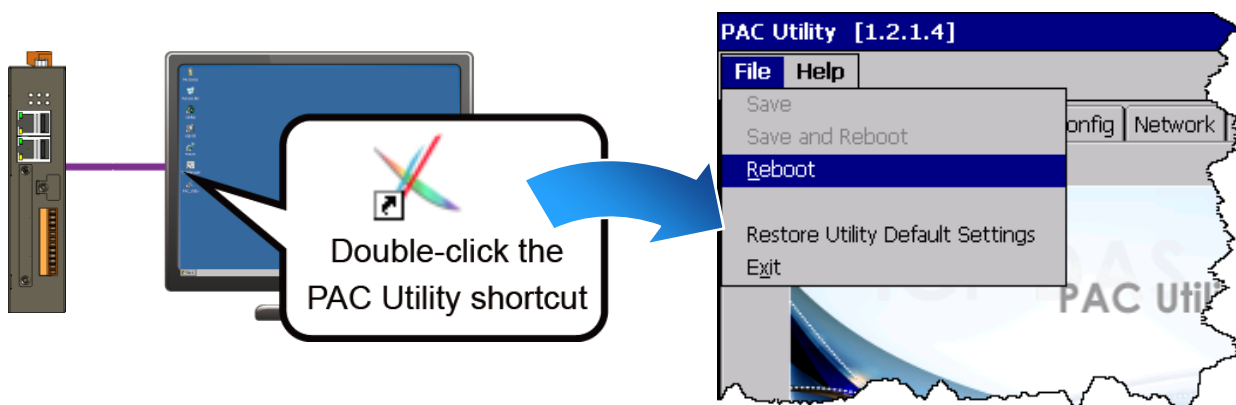
- 1) Click Start menu, point to Settings, click Control Panel, and then click Regional Settings



- 2) Click User Interface Language tab, choose your local language, and then click OK button

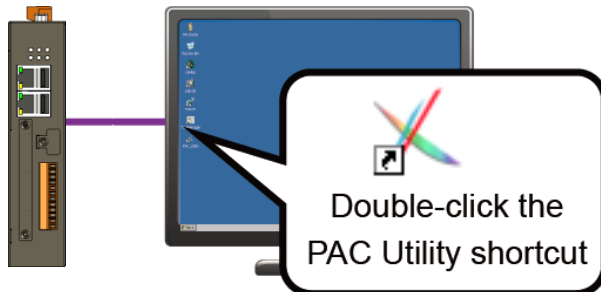


- 3) Double-click the PAC Utility on the desktop, and then reboot the WP-2000M(X)-CE7 for changes to take effect

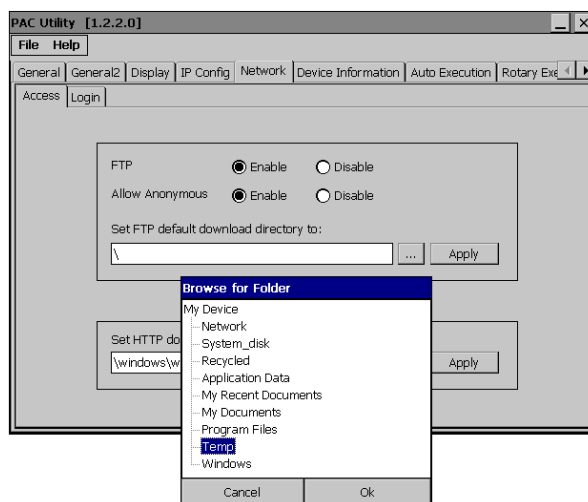


4 Using PAC Utility to Manage the WP-2000M(X)-CE7

1) Double-click the PAC Utility on the desktop



2) Configure IP address (DHCP), FTP Server, Auto Execution files..., etc



3) Reboot the WP-2000M(X)-CE7

